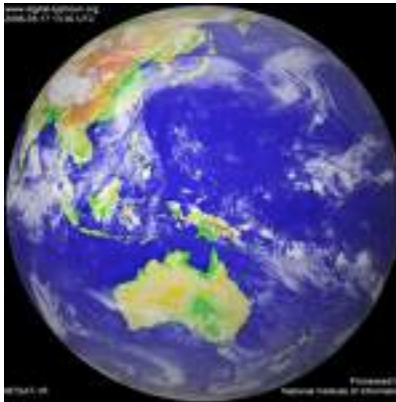


International Network for School Social Work Founded in 1990

2012 International Survey of School Social Work



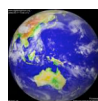
<http://internationalnetwork-schoolsocialwork.htmlplanet.com>

Contact mhuxtable@olympus.net

The Goals of the International Network

To provide:

-  **Information about school social work around the world**
-  **Links between school social work associations**



The 2012 International Survey of School Social Work

The following are the results of the questionnaire that I sent to 51 countries in 2011 and 2012.

School social work continues to grow around the world. Contacts between school social workers in different countries are expanding, aided by the International Network for School Social Work (<http://internationalnetwork-schoolsocialwork.htmlplanet.com>) and the five international conferences that have taken place so far, the first in Chicago, USA in 1999, the second in Stockholm, Sweden in 2003, the third in September 2006 in Pusan, Korea, the fourth in April 2009 Auckland, New Zealand and the fifth in April 2012 in Accra, Ghana.

This document contains contact information for national school social work associations and data about the status of school social work. I am sending it to you so that you can make this information available to school social workers in your country.

Responses were received from 31 countries: Argentina, Australia, Austria, Canada, China, Curacao, Czech Republic, Finland, Germany, Hungary, Iceland, India, Japan, Korea, Liechtenstein, Luxembourg, Mongolia, Macedonia, Malta, New Zealand, Nigeria, Norway, Singapore, Slovakia, South Africa, Sri Lanka, Sweden, Switzerland, Trinidad and Tobago, United States, and Vietnam.

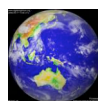
Information from earlier surveys is added in a Supplement for countries for which no current data are available: Estonia, Ghana, Hong Kong, Saudi Arabia, Taiwan, the United Arab Emirates and the United Kingdom.

I hope you will distribute this document to your professional associations and their members and encourage them to use it. The data it contains can be useful in social work education, to encourage increased international contacts and for promoting school social work in your own country.

You are free to copy and share this document providing you:

- *Attribute the document and its contents to the International Network for School Social Work, Coordinator Marion Huxtable*
- *Do not alter or add to the document*
- *Do not use the document for commercial purposes*

Marion Huxtable
December 2012



Argentina

Name and address of persons providing this information:

Graciela Tonon gracielatonon@hotmail.com
and Miguel Meza <mailto:ayeyguada@hotmail.com>.

UNI-COM, Faculty of Social Sciences.
Universidad Nacional de Lomas de Zamora, Argentina.
<http://unicom.unlzsociales.com.ar/In/index-es.html>

Name of professional school social work association in your country: None. The social work profession is regulated by national and by some provincial laws. There are no specific regulations and no professional association solely for school social workers.

Do school social workers work on:

Attendance problems?	Yes
Emotional problems?	No
Behavioral problems?	Yes
Material needs, such as food and clothing?	Yes
Motivational problems?	No
Special education for the handicapped?	Yes

Do school social workers do the following:

Evaluations?	Yes
Groupwork?	Yes
Casework?	Yes
Preventive activities?	Yes
Home visits?	Yes
Counseling?	No
Consultation with teachers?	Yes

Are school social workers employed by:

School or school system? yes
There aren't school social workers in all the provinces of the country

What are the qualifications required for employment as a school social worker?

University degree or Tertiary degree

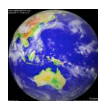
What is the professional title used for school social workers:

In some provinces of the country the position is "school social work" and requires a social work degree and a teaching certificate. In others the position is "social education assistant" and can be occupied by professionals with a social work degree or by other professional degree such as sociologist, anthropologist, or specialized teachers.

Approximate number of school social workers employed in your country:

There is no statistics about it, but I think it is about 25% of the total number of social workers.

When did school social work start in your country? Approximately in the 60's



Australia

Name and address of person providing this information:

Chris Barrett
barrett.chris.a@edumail.vic.gov.au
18 Swan Parade
St Leonards VIC 3223
Australia

Name of professional school social work association in your country:

Australian Association of Social Workers.

Web site address: www.aasw.asn.au

Name and address of President of your professional school social work association:

AASW School Social Work Practice Group
AASW Practice Standards for School Social Workers:
<http://www.aasw.asn.au/document/item/814>
Convenor:
Paul Jameson
c/- Monterey Secondary College
Silvertop St
Frankston Nth 3200
jameson.paul.a@edumail.vic.gov.au

International Contact:

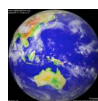
Linda Johannsen
401 Macarthur ST
Soldiers Hill
Ballarat VIC 3350
Australia
johannsen.linda.j@edumail.vic.gov.au

Convenor: Peer Supervision

Chris Barrett
Geelong Bellarine Network
c/- Newcomb Secondary College
Bellarine Highway
Newcomb VIC 3219
Australia
barrett.chris.a@edumail.vic.gov.au

Do school social workers work on:

Attendance problems?	Yes
Emotional problems?	Yes
Behavioral problems?	Yes



Material needs, such as food and clothing? Yes
Motivational problems? Yes
Special education for the handicapped? Yes
Child protection? Yes

Do school social workers do the following:

Evaluations? Yes
Groupwork? Yes
Casework? Yes
Preventive activities? Yes
Home visits? Yes
Counseling? Yes
Consultation with teachers? Yes

Are school social workers employed by:

School or school system? Yes. Individual schools and school systems, government and private agencies

What are the qualifications required for employment as a school social worker?

Four year BSW or 2 year post-graduate BSW and eligibility for membership of the AASW.

What is the professional title used for school social workers?

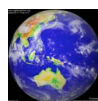
School social worker or social worker

Approximate number of school social workers employed in your country:

150

When did school social work start in your country?

The first social worker was employed at the end of 1948 in the government system in the state of Victoria. Other states also developed professional social work services in the post-war years. The Diploma of Social Studies was first offered at the University of Melbourne in the early 1940s.



Austria

Name and address of persons providing this information:

Michaela Adamowitsch | Lisa Lehner | Rosemarie Felder-Puig

Michaela.Adamowitsch@lbihr.lbg.ac.at

Ludwig Boltzmann Institut Health Promotion Research (LBIHPR)

Ludwig Boltzmann Gesellschaft GmbH

Untere Donaustraße 47/3.OG, 1020 Vienna

Answers are based on a survey conducted by the Ludwig Boltzmann Institute Health Promotion Research with the intention to create a knowledge base on school social work in Austria (Adamowitsch, Lehner & Felder-Puig 2011). Data was collected retrospectively for the school year 2010/11 via an online questionnaire based on an extensive review of German-language literature. Finally, 24 Austrian school social work projects/programs (at least one in each of Austria's nine federal states) could be included in a final report. This report provides a comparative overview of nationwide figures and tendencies, as well as detailed descriptions of all projects/programs.

Further tasks the LBIHPR is currently working on are the creation and promotion of a shared quality and evaluation framework, and a guideline for implementation of school social work in Austria.

Name of professional school social work association in your country: none (as of 2012)

School social workers work on:

Attendance problems

In 2010 the Austrian Federal Ministry for Education, the Arts and Culture initiated several pilot projects throughout Austria for a two-year trial to test new models of school social work. The initiative is co-funded by the European Social Fund and as a consequence the focus of the pilot-projects is set on reducing early school leaving.

Emotional and behavioral problems

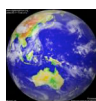
Counseling and mediating are offered to school-aged children with emotional and behavioral problems and are among the main services of school social work. In practice, methods of intervention and de-escalation are seen to be of equal importance as methods of prevention.

Material needs, such as food and clothing

In cases of disregard of pupils, school social workers would act as intermediary between legal guardians and local child and youth service agencies.

Motivational problems

Only four school social work projects/programs state that supporting pupils in fulfilling educational tasks and achieving educational objectives are among their standard methods, whereas a majority addresses motivational problems indirectly by working on underlying problems.



Special education for people with disabilities

A majority of projects perceive non-discrimination and inclusion as guiding principles for their work. However, special education is provided by specifically trained personnel and not by school social workers.

Child protection

School social work is governed by the federal law on youth welfare. In case of child endangerment school social workers are required to report to the local child and youth service agencies. In general, however, school social work aims at prevention as well as providing early counseling and mediation.

School social workers do the following:

Evaluations - All projects keep (statistical) records and produce annual reports for project-internal review and as a proof of performance for financing institutions. This internal evaluation is seen as a basis for reflexive adaptation of expectations and goals building on past experiences and accounting for changes of baseline conditions. Thus far external evaluations were project-centered. In total, nine projects/programs had been evaluated by external institutions/experts prior to the survey.

Groupwork - almost all projects (n=23)

Casework - all projects

Preventive activities - most projects (as part of different methods and approaches)

Home visits - In most projects there exists a trade-off between on-site presence and work in the social environment mostly due to employment conditions (high prevalence of part-time contracts). Three projects/programs estimate the percentage of outreach work to be 50 - 60 % on average. The nationwide average of outreach work is about 13.5 %, which is in line with the finding that only five projects/programs named outreach work as a basic principal.

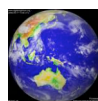
Counseling - mainly geared towards children/teenagers, less often towards teaching staff and parents/guardians

Consultation with teachers - Within schools teachers are among the most frequent collaborators of school social workers, both in informal and formal settings.

School social workers are employed by:

There are four different models in place varying in particular between federal states. School social workers can be employed by either:

1. the school board (currently only in Vienna)
2. directly by the local child and youth service agency (currently only in Upper Austria)
3. by a private agency authorized by local child and youth service agencies (most prevalent model - in 2010/11 14 different agencies)
4. by private agencies (in 2010/11 2 agencies).



Funding is provided by different sources (mainly by municipalities and federal state authorities).

What are the qualifications required for employment as a school social worker?

Currently, most practitioners are (certified) social workers; fewer have a background in social pedagogy or educational sciences. Specific qualifications are not officially required (absence of recognized quality standards in Austria) and the educational background of school social workers is not uniform nationwide. However, most projects put emphasis on employing only qualified social workers: in 2010/11 only two projects/programs did not employ (certified) social workers.

What is the professional title used for school social workers

School Social Worker | Schulsozialarbeiter/in

Approximate number of school social workers employed in your country:

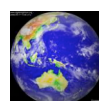
In the school year 2010/11 131 school social workers (75 % female) were in charge of 256 schools (4 % of all schools in the regular education system).

When did school social work start in your country?

Individual projects started in the mid-1990s. Currently, there is an increasing interest in advancing and expanding school social work throughout Austria.

Reference

Adamowitsch, M, Lehner, L, Felder-Puig, R (2011): Schulsozialarbeit in Österreich: Darstellung unterschiedlicher Implementierungsformen. Wien: LBIHPR Forschungsbericht. [*School Social Work in Austria: Outlining Different Models of Implementation. Vienna: LBIHPR Research Report.*]



Canada

Name and address of person providing this information:

Rose D'Alimonte, MSW, RSW
School Social Worker
rose.dalimonte@tcdsb.org
Toronto Catholic District School Board
414. 574-0262

Name of professional school social work association in your country:

Canadian Association of School Social Workers and Attendance Counsellors
Web site address: <http://www.casswac.ca/>
Ontario Association of Social Workers – School Social Work Committee.
Web site address: www.oasw.org

Name and address of President of your professional school social work association:

CASSWAC President:
Rebecca Gray rgray@rrsd.mb.ca OASW – School Social Work Committee Chair:
Rose D'Alimonte, MSW, RSW
School Social Worker
Toronto Catholic District School Board
Phone: (416) 574-0262
Email: rose.dalimonte@tcdsb.org;

Do school social workers work on:

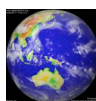
Attendance problems?	Yes
Emotional problems?	Yes
Behavioral problems?	Yes
Material needs, such as food and clothing?	Yes
Motivational problems?	Yes
Special education for the handicapped?	Yes
Child protection?	Yes, as needed

Do school social workers do the following:

Evaluations?	At times
Groupwork?	Yes
Casework?	Yes
Preventive activities?	Yes
Home visits?	Yes
Counseling?	Yes
Consultation with teachers?	Yes

School social workers employed by?

School System



What are the qualifications required for employment as a school social worker?

MSW or BSW

What is the professional title used for school social workers?

School Social Worker

Approximate number of school social workers employed in your country:

As reported in the book chapter (School Social Work Worldwide) on Canada, there are 750 school social workers in seven provinces, including about 450 in Ontario.

When did school social work start in your country?

As reported in the book chapter (School Social Work Worldwide) on Canada, school social work started with truancy officers (attendance counsellors) before 1900 but school social work was not identified until the 1940's or so.



China (excluding Hong Kong and Macau)

Name and address of person providing this information:

Leung, Tong-lit Charles (the information provided below is collected from my friends who are working as school social workers in Beijing city, and Sichuan & Guangdong provinces. Thank you for their efforts!)

leungctl@gmail.com

Name of professional school social work association in your country:

There is no specialized professional body in school social work in China; however, China Association of Social Work (CASW) is the only one authorized organization representing social workers in China.

Web site address:

<http://www.cncasw.org/cncasw/>

Do school social workers work on:

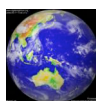
Attendance problems?	Yes
Emotional problems?	Yes
Behavioral problems?	Yes
Material needs, such as food and clothing?	Yes
Motivational problems? enhancement	Yes, especially in learning motivation
Special education for people with disabilities?	No, it is another type of service provided by other social workers and professionals in Sichuan; and this is the service provided occasionally depending on the particular needs of individual case.
Child protection?	Yes, generally speaking. However, if the case involves criminal issues or arouses media's concern, it will not able to be handled by school social workers any more.

Do school social workers do the following:

Evaluations?	Yes, it is because school social workers are accountable to the funder. School social workers need to demonstrate their efforts and service outcomes through evaluations.
Groupwork?	Yes
Casework?	Yes
Preventive activities?	Yes
Home visits?	Yes, generally speaking. However, the situation should vary in different regions of China
Counseling?	Yes
Consultation with teachers?	Yes

School social workers employed by:

Generally speaking, school social workers are employed by NGOs. They are mainly assigned to station at either primary or secondary schools. Some social workers are working at schools



only when there is collaboration between schools and their agencies for some special topics (e.g. anti-bullying, career planning, and sex education etc.)

According to my understanding, there are many NGOs providing school social work services in different regions of China. For example, according to *Reports on Development of Social Work in Shenzhen 2011*

(<http://cncasw.blog.163.com/blog/static/16913796820112251843461/>), there are eight NGOs are now providing school social work services in Shenzhen. Narada Foundation provides financial and professional supports to the school social work services in Beijing (<http://old.nandufoundation.org/english/index.asp>); Shanghai Lequn Social Work Service (http://translate.google.com/translate?sl=zh-CN&tl=en&js=n&prev=_t&hl=zh-TW&ie=UTF-8&layout=2&eotf=1&u=http%3A%2F%2Fwww.lequn.org%2Fabout.asp%3FID%3D104&act=url) provides professional school social work services in Pudong District of Shanghai; Qi Chuang Social Work Service Center (http://translate.google.com/translate?sl=zh-CN&tl=en&js=n&prev=_t&hl=zh-TW&ie=UTF-8&layout=2&eotf=1&u=http%3A%2F%2Fwww.qichuang.org%2Findex.php%2Fzh%2Fservices%2Fschool-support-and-social-work-service&act=url) is developing school support and social work services in Guangdong and Sichuan provinces.

What are the qualifications required for employment as a school social worker?

It is preferable to have social work training in undergraduate level. And it becomes a requirement to pass the professional level examination of “assistant social worker”

(http://translate.google.com/translate?sl=zh-CN&tl=en&js=n&prev=_t&hl=zh-TW&ie=UTF-8&layout=2&eotf=1&u=http%3A%2F%2Fsw.mca.gov.cn%2Farticle%2Fzysppj%2F&act=url) for being social worker in China.

What is the professional title used for school social workers?

Social Worker; Big Elder Brother / Sister; Teacher (Shegong; Gege / Jiejie; Laoshi)

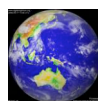
Approximate number of school social workers employed in your country:

There are no official statistics regarding this number around the country. However, according to *Reports on Development of Social Work in Shenzhen*, there were 144 school social workers, till December 2010, working in Shenzhen. Moreover, many social work placement students are now providing their services in non-stationing mode or project-based nature in various regions of China. Therefore, according to my estimation, more than a thousand school social workers should be working in China nowadays.

When did school social work start in your country?

According to the official document, contemporary school social work services of People’s Republic of China have been commenced since 2002 in Pudong district of Shanghai.

[Wen, J. & Liu, Y. (2009). school social work practice. In CASW (Ed.) *Reports on Development of Social Work in China 1988-2008*. Beijing: Social Sciences Academic Press (China). [in Chinese]]



Curacao (part of the Caribbean Dutch Kngdom. The Netherlands Antilles does not exist anymore since October 10 of 2010).

Name and address of person providing this information:

Ruckly Ettienne,
Kaya Jacob Posner 41, Curacao N.A.
T: 599-9 466-6111
F: 599-9 461-9161
Ruckly.Ettienne@curacao-gov.an

Name of professional school social work association in your country:

We do not have an association. Here in Curacao all school social workers are a part of the school administration or school board.

Web site address: None

Name and address of President of your professional school social work association:

Mrs. S. Braun is the actual president of our public school board.

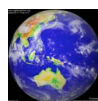
Do school social workers work on:

Attendance problems?
Emotional problems?
Behavioral problems?
Material needs, such as food and clothing?
Motivational problems?
Special education for the handicapped?
Child protection?

Yes, all school social workers have each 10 schools that he or she is responsible for. Every week we make a plan to visit these schools. Every school/teacher/principal must send a application form with the situation or the reason why they want our help, after that we will visit the student in need of our guidance.

Do school social workers do the following:

Evaluations?
Groupwork?
Casework?
Preventive activities?
Home visits?
Counseling?
Consultation with teachers?



Yes, as a school social worker on Curacao we do all the activities.

School social workers employed by:

We are employed by a school system

What are the qualifications required for employment as a school social worker?

Bachelor Social work

What is the professional title used for school social workers?

In Curacao we speak many languages... our main language is Papiamentu. In our school systems we use mostly Dutch. Our title in Dutch is “Schoolmaatschappelijkwerker” is the same as school social worker

Approximate number of school social workers employed in your country:

15 school social workers on the island divided in different school boards

When did school social work start in your country?

Approximately in 1985.



Czech Republic

Name and address of person providing this information:

Tatiana Matulayová, Sabinovská Street 18, 080 01 Prešov, Slovakia
tatiana.matulayova@tul.cz

Name of professional school social work association in your country:

Does not exist

Name and address of President of your professional school social work association: -

Czech law does not recognize the concept of school social work and school social worker, despite the fact that social work in broader sense is implemented in practice.

The situation is similar to situation in Slovakia. Czech social workers are working in educational facilities for provision of institutional (residential) care and Juvenile Correctional Education (children's home, diagnostic institute). Second field are facilities for counseling. However, these social workers are neither referred to as school social workers nor perceived themselves as school social workers. Most important elements of the Czech education system are teachers, school special educators and school psychologists. Although representative survey is not yet available, it is obvious that significant barriers to establishment of position of school social worker are lack of tradition of social work, unrecognized need for social work in schools, a multidisciplinary team providing high quality consultancy services to children and parents in both countries built (in the Czech Republic and the Slovak Republic) from the 1970-ies. Other obstacles are the lack of awareness of school social work among Czech teachers, lack of legislation and missing funding.

I have no information on creation of position of school social workers in Elementary Schools in the Czech Republic.

Do school social workers work on:

Social workers who work in education system focus mainly on administrative work, cooperation with the child care protection, courts etc.

Attendance problems?

Emotional problems?

Behavioral problems?

Material needs, such as food and clothing?

Motivational problems?

Special education for people with disabilities?

Child protection?

Do school social workers do the following:

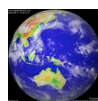
Evaluations?

Groupwork?

Casework?

Preventive activities?

Home visits?



Counseling?

Consultation with teachers?

Are school social workers employed by:

School or school system?

Other agency? (Give agency names)

What are the qualifications required for employment as a school social worker?

Social workers in educational system: Bachelor's or Master's study program in the field of Social Work

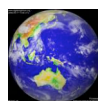
What is the professional title used for school social workers?

There is no professional title used for school social workers. If any, they are referred as social workers.

In Czech language: sociální pracovník.

Approximate number of school social workers employed in your country: 0

When did school social work start in your country? 0



Finland

Name and address of person providing this information:

Hanna Gråsten-Salonen, hanna.grasten-salonen@koulut.tampere.fi

Name of professional school social work association in your country:

Koulukuraattorit – Skolkuratorer ry, School Social Work Association of Finland

Web site address: <http://www.talentia.fi/koulukuraattorit>

Name and address of President of your professional school social work association:

Hanna Gråsten-Salonen

email: <mailto:hanna.grasten-salonen@koulut.tampere.fi>

Do school social workers work on:

Attendance problems?	Yes
Emotional problems?	Yes
Behavioral problems?	Yes
Material needs, such as food and clothing?	No
Motivational problems?	Yes
Special education for the handicapped?	Yes
Child protection?	School social workers who are employed by social services

Do school social workers do the following:

Evaluations?	Yes
Groupwork?	Yes
Casework?	Yes
Preventive activities?	Yes
Home visits?	Yes
Counseling?	Yes
Consultation with teachers?	Yes

Are school social workers employed by:

School or school system? Mostly school system

Other agency? Social services

What are the qualifications required for employment as a school social worker?

Master's Degree in Social Work

What is the professional title used for school social workers?

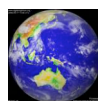
School social worker and *koulukuraattori* in Finnish

Approximate number of school social workers employed in your country:

548

When did school social work start in your country?

1966



Germany

Name and address of person providing this information:

Anja Reinecke-Terner, Hannover, anja.terner@gmx.de

Name of professional school social work association in your country:

There is a new association of school social work for the Federal Republic of Germany. The initiator of it is the "Kooperationsverbund Schulsozialarbeit" (Cooperation Association of School Social Work) and some "Länder" (States of Germany) - associations (for example two Associations from Niedersachsen: <http://www.schulsozialarbeit-nds.de/> and Baden-Württemberg: <http://www.netzwerk-schulsozialarbeit.de/>). The Kooperationsverbund has no official homepage.

This year on 30.11./01.12.2012 it will hold the first national federal congress in Hannover. See <http://bukoschulsozialarbeit.blogspot.de/>

Name and address of President of your professional school social work association:

There is no President at this time. (School social workers are organized in their local State Associations.)

Do school social workers work on:

The priorities depend on the political intention in the states and the need of each school. Examples for thematic priorities:

- Prevention and leisure education in "all-day schools"
- School social work in the "Bildungs-und Teilhabepaket" (education and participation-programme) for education of disadvantaged young people
- Help in transition from school to working

Attendance problems? Yes

Emotional problems? Yes

Behavioral problems? Yes

Material needs, such as food and clothing? (Sometimes, not very often)

Motivational problems? Yes

Special education for the handicapped? (Sometimes, not so often, for this part there are mostly special teachers or caregivers, but with the "inclusive-school programme" it could be as well an important part for school social work in the future)

Do school social workers do the following:

Evaluations? Sometimes

Groupwork? Yes

Casework? Yes

Preventive activities? Yes

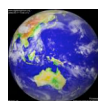
Home visits? Sometimes

Counseling? Yes

Consultation with teachers? Yes

Are school social workers employed by:

School or school system?



Other agency?

Both: schools and youth welfare and sometimes other public entities

The preferred agency is the youth welfare

What are the qualifications required for employment as a school social worker?

Mostly "social worker"

What is the professional title used for school social workers:

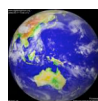
Sometimes different names but mostly "Schulsozialarbeit"

Approximate number of school social workers employed in your country:

There is no data because each of the 16 states with school social work has its separate system. The "Gewerkschaft Erziehung und Wissenschaft- GEW" (Trade Union for Education and Science) is starting research on this together with some Universities to get reliable statistical data.

When did school social work start in your country?

About 1968, but it depends on the *Land* (State).



Hungary

Name of person providing this information:

Zsolt Máté

gergalmate@gmail.com

Name of professional school social work association in your country:

1. Iskolai Szociális Munkások Egyesülete (Association of School Social Workers)
2. *Iskolai Szociális Munkások Magyarországi Egyesülete (Hungarian Association of School Social Workers)*

Web site address:

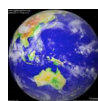
1. www.isme.hu
2. www.miszme.hu

Professional title (or titles) used for school social workers:

School social worker (iskolai szociális munkás)

Approximate number of school social workers employed in your country:

70



Iceland

Name and address of person providing this information:

Hjördís Árnadóttir, hjordis@fva.is. Framnesvegur 28, 101 Reykjavík.

Name of professional school social work association in your country:

Fagdeild á Fræðslu og skólasviði (profession of education and school field)

Web site address:

<http://www.felagsradgjof.is/index.php?option=content&task=view&id=20&Itemid=43>

Name and address of President of your professional school social work association:

Hjördís Árnadóttir, Framnesvegur 28, 101 Reykjavík.

Do school social workers work on:

Attendance problems?	Yes
Emotional problems?	Yes
Behavioral problems?	Yes
Material needs, such as food and clothing?	Yes
Motivational problems?	Yes
Special education for people with disabilities?	Yes
Child protection?	Yes

Do school social workers do the following:

Evaluations?	Yes
Groupwork?	Yes
Casework?	Yes
Preventive activities?	Yes
Home visits?	No
Counseling?	Yes
Consultation with teachers?	Yes

Are school social workers employed by:

School or school system? Yes

What are the qualifications required for employment as a school social worker?

The qualifications are an operating license in Social Work with MA-degree.

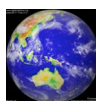
What is the professional title used for school social workers?

Skólafélagsráðgjafi / school social worker.

Approximate number of school social workers employed in your country:

There are approximately 10 school social workers employed in Iceland.

When did school social work start in your country? The first school social worker was employed to a school in Iceland in 1977.



India

Name and address of person providing this information:

Dr.M.Ubaidullah,Chairman,
ubaidullahm@rediffmail.com
Department of Social Work & Population Studies,
Sri Venkateswara University,
Tirupathi-517502,
Andra Pradesh,
India

Name of professional school social work association in your country:

None

Name and address of President of your professional school social work association:

Not Applicable

Do school social workers work on:

Attendance problems?	Yes
Emotional problems?	Yes
Behavioral problems?	Yes
Material needs, such as food and clothing?	Yes
Motivational problems?	Yes
Special education for the handicapped?	Yes
Child protection?	Yes

Do school social workers do the following:

Evaluations?	Yes
Groupwork?	Yes
Casework?	Yes
Preventive activities?	Yes
Home visits?	Yes
Counseling?	Yes
Consultation with teachers?	Yes

School social workers employed by:

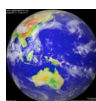
School System

What are the qualifications required for employment as a school social worker?

Master Of Social Work (MSW). (Note: Postgraduate social work students are placed in schools to practice casework and groupwork).

What is the professional title used for school social workers?

School Social Worker|Special Education Teacher. Both the central and State Governments have opened schools for physically challenged people in the last fifteen years in response to



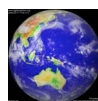
the international mandate. A substantial amount is being spent by both governments for this section of society and a large number of social workers are employed in these schools.

Approximate number of school social workers employed in your country:

More than 10,000 (estimation).

When did school social work start in your country?

1970



Japan

Name and address of person providing this information:

Eizaburo Yamashita: YMSHTEZ@jcs.w.ac.jp. 5036-37-1-107 Yamaguchi, Tokorozawa, Saitama 359-1145

Name of professional school social work association in your country:

School Social Work Association of Japan: <http://sswaj.org/>

Japanese Society for the Study of School Social Work: <http://www.jsssw.com/news.html>

Name and address of President of your professional school social work association:

Shunsuke Chou

csyun@dl.dion.ne.jp

Do school social workers work on:

Attendance problems?	Yes.
Emotional problems?	Yes.
Behavioral problems?	Yes.
Material needs, such as food and clothing?	No.
Motivational problems?	No.
Special education for the handicapped?	Yes.
Child protection?	No.

Do school social workers do the following:

Evaluations?	No.
Groupwork?	No.
Casework?	Yes.
Preventive activities?	No.
Home visits?	Partly yes.
Counseling?	Yes.
Consultation with teachers?	Yes.

Are school social workers employed by:

School or school system? Yes.

What are the qualifications required for employment as a school social worker?

Not clarified yet, but beginning to be required to be either a certified social worker or a certified psychiatric social worker.

What is the professional title used for school social workers?

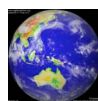
School social worker.

Approximate number of school social workers employed in your country:

750.

When did school social work start in your country?

1986 on a private practice level. 2008 on a government level.



Korea

Name and address of person providing this information:

Hwa-Ok (Hannah) Park, PhD. hpark@kangnam.ac.kr
College of Social Welfare,
Kangnam University
40 Kangnam-ro, Yongin City,
Gyeonggi-do, Republic of Korea, 446-702

Name (and web site addresses) of professional school social work association in your country:

1. The Korean Society of School Social Work (KSSSW)
<http://www.schoolsocialwork.org/>
2. Korean Association of School Social Workers (KASSW)
<http://www.kassw.or.kr/>

Name and address of President of your professional school social work association:

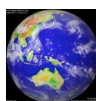
1. Helen Noh, PhD hnoh@ssu.ac.kr
Dep. of Social Welfare, Soongsil University
369 Sangdo-ro, Dongjak-ku, Seoul, Republic of Korea
2. Kyung-Sun Lim, PhD care7@nate.com
Dep. of Social Welfare, Baekseok Arts University
9-23 Bangbae-ro, Seocho-ku, Seoul, Republic of Korea

Do school social workers work on:

Attendance problems? -	Yes
Emotional problems? -	Yes
Behavioral problems? -	Yes
Material needs, such as food and clothing? -	Yes
Motivational problems? -	Yes
Special education for the handicapped? -	Yes
Child protection? -	Yes

Do school social workers do the following:

Evaluations? -	Yes
Groupwork? -	Yes
Casework? -	Yes
Preventive activities? -	Yes
Home visits? -	Yes
Counseling? -	Yes
Consultation with teachers? -	Yes
Case management -	Yes



Are school social workers employed by:

School or school system? Yes Other agency? Yes

What are the qualifications required for employment as a school social worker?

B.A. degree or above in social welfare or

M.A. degree (in social welfare) with training experience offered by both KSSSW and KASSWP preferred.

Pass on the national qualification exam for social workers (administered by the Korean Government)

and on the qualification exam for school social workers (administered by KASSW) preferred

What is the professional title used for school social workers?

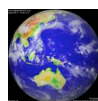
“School social worker” in English, and “school social welfare worker” and/or “community educational welfare officer” in Korean

Approximate number of school social workers employed in your country:

1,517 persons

When did school social work start in your country?

In 1993



Liechtenstein

Name and address of person providing this information:

Frick Hansjörg, Weiterführende Schulen Triesen, Landstrasse 313, 9495 Triesen
frick.hansjoerg@schulen.li

Name of professional school social work association in your country:

Schulsozialarbeit Liechtenstein

Web site address: www.schulsozialarbeit.li

Name and address of President of your professional school social work association: We don't have a President, I do this job without a title.

Do school social workers work on:

Attendance problems?	Yes
Emotional problems?	Yes
Behavioral problems?	Yes
Material needs, such as food and clothing?	No
Motivational problems?	Yes
Special education for people with disabilities?	No
Child protection?	Yes

Do school social workers do the following:

Evaluations?	Yes
Groupwork?	Yes
Casework?	Yes
Preventive activities?	Yes
Home visits?	Yes
Counseling?	Yes
Consultation with teachers?	Yes

Are school social workers employed by:

School or school system? Yes

What are the qualifications required for employment as a school social worker?

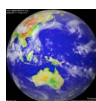
1. Education in Social Work,
2. CAS in School Social Work

What is the professional title used for school social workers

School social worker
Schulsozialarbeiter

Approximate number of school social workers employed in your country: 5

When did school social work start in your country? 2004



Luxembourg

Name and address of person providing this information:

Christian Jacobs, Nordstad Lycée, Diekirch phone 00352 80475443
christian.jacobs@nosl.lu

Name of professional school social work association in your country:

Does not exist

Web site address: None

Name and address of President of your professional school social work association:

None

Do school social workers work on:

Attendance problems?	Yes
Emotional problems?	Yes
Behavioral problems?	Yes
Material needs, such as food and clothing?	Yes
Motivational problems?	Yes
Special education for the handicapped?	Yes
Child protection?	Yes

Do school social workers do the following:

Evaluations?	Yes
Groupwork?	Yes
Casework?	Yes
Preventive activities?	Yes
Home visits?	Yes
Counseling?	Yes
Consultation with teachers?	Yes

Are school social workers employed by:

School or school system? Yes

What are the qualifications required for employment as a school social worker?

Diploma as social worker

What is the professional title used for school social workers

School social worker

Approximate number of school social workers employed in your country:

34

When did school social work start in your country?

Officially in 2001, some social workers were pioneers and started 25 years ago.



Macedonia

Name and address of person providing this information:

Ms. Maja Gerovska Mitev,
Faculty of Philosophy, Ss. Cyril and Methodius University,
Blvd. Krste Misirkov b.b.
1000 Skopje, Macedonia
gerovska@zfz.ukim.edu.mk

Name of professional school social work association in your country:

There is Union of Associations of Social Workers, involving few school social workers.

Name and address of President of your professional school social work association:

The president of this organization is: Ms. Blagrodna Ivanova (work phone contact – + 389 2 3297700)

Do school social workers work on:

Attendance problems?	Yes
Emotional problems?	Yes
Behavioral problems?	Yes
Material needs, such as food and clothing?	Yes
Motivational problems?	Yes
Special education for the handicapped?	Yes

Do school social workers do the following:

Evaluations?	Yes
Groupwork?	Yes
Casework?	Yes
Preventive activities?	Yes
Home visits?	No
Counseling?	Yes
Consultation with teachers?	Yes

Are school social workers employed by:

School or school system? Yes

What are the qualifications required for employment as a school social worker?

BA in Social Work

What is the professional title used for school social workers

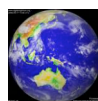
“Social worker”

Approximate number of school social workers employed in your country:

5-6

When did school social work start in your country?

1995



Malta

Name and address of person providing this information:

Marija Zahra, Principal Social Worker, Social Work Service, Education Psycho-Social Services, Student Services Department, Triq Fra Gaetano Pace Forno, Hamrun, Malta.
marija.zahra@gov.mt

Name of professional school social work association in your country: N/A

Do school social workers work on:

Attendance problems?	Yes
Emotional problems?	Yes
Behavioral problems?	Yes
Material needs, such as food and clothing?	Yes
Motivational problems	Yes
Special education for people with disabilities?	Yes
Child protection?	No

Do school social workers do the following:

Evaluations?	Yes
Groupwork?	No
Casework?	Yes
Preventive activities?	No
Home visits?	Yes
Counseling?	Yes
Consultation with teachers?	Yes

Are school social workers employed by:

School or school system? Yes

What are the qualifications required for employment as a school social worker?

BA (Hons) Social Work

What is the professional title used for school social workers

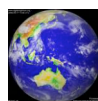
Social Workers / Haddiema Soċjali

Approximate number of school social workers employed in your country:

13 (another 2 to be replaced) plus Senior Social Worker and Principal Social Worker

When did school social work start in your country?

In 1989 the first qualified Social Workers joined the Education Welfare Unit whilst in 1993 it became incumbent of all newly appointed staff that they possess a Diploma or B.A. Hons in Social Work.



Mongolia

Name and address of person providing this information:

B. Nandintsetseg (Nandia), Social Worker, Mongolian Association of School Social Workers, nandia35@yahoo.com, nandintsetseg.battulga@gmail.com (976) 99832090

Name of professional school social work association in your country:

Mongolian Association of School Social Workers. No web site as yet. (The goal is to have this completed by beginning 2013.)

Name and address of President of your professional school social work association:

B. Munkhjargal, President

Email: monkhjargal2005@yahoo.com

Mailing Address: Mongolian Association of School Social Workers, National Authority for Children, 3rd Floor, Room 304

Ulaanbaatar, 15160 Mongolia

Tel/Fax: (976)70111447

Mobile: (976) 99168685

*We are in the process of moving offices. The new office address is currently unknown.

What school social workers work on:

School social workers in Mongolia have been focusing on the following directions:

1. Advocate for child-friendly environments in educational settings.
2. Provide child protection services and activities.
3. Facilitate personal development of children through support for their participation in child-led organizations and interest groups.
4. Collaborate with families, schools, communities, and governmental and non-governmental organizations to protect child rights.

School social workers work on the following issues in the school for children:

Child abuse and neglect

Minority children

Juvenile delinquency

Child participation

Behavior and health problems

Child labor

School dropout

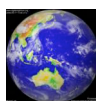
Children with mental, physical and learning disabilities

School social workers use the following resources to solve these problems:

Internal resources: child, teacher, school administration, student led organizations

External resources: parents, community, non-governmental, international organizations and interdisciplinary team

Are school social workers employed by schools or other agencies:



School social workers are employed directly by schools, under the Ministry of Education.

What are the qualifications required for employment as a school social worker?

The required qualifications for school social worker are denoted at the job description of school social worker. As designated in the job description, the school social work position requires minimum education of a Bachelor's Degree in Social Work, or in the event that the applicant does not have a BSW, a bachelor's degree in another field and at least 10 credit hours of social work education. According to Mongolian government internal rules, school social workers who do not have a BSW degree upon hire may obtain their 10 credit hours in three different ways. They can pursue a Masters in Social Work while working as a school social worker, join an approved BSW program through a private university, or participate in approved continuing education trainings.

What is the professional title used for school social workers?

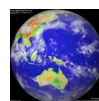
The title of "School Social Worker" is used in Mongolia. In Mongolian language, this is: “Сургуулийн нийгмийн ажилтан.”

Approximate number of school social workers employed in your country:

According to the statistic data of the academic year 2005-2006 (published by Ministry of Science and Technology, Culture, Education) **624** school social workers are working in the secondary school.

When did school social work start in your country?

The School Social work program was introduced by Save the Children UK. The first social workers were placed in Ulaanbaatar secondary schools in 1997. In 2000 the program was expanded to other provinces. By 2001, every secondary school in Mongolia had an operating social work program. In 2002, the Ministry of Enlightenment and the Ministry of Health and Social Welfare issued a joint decree on the job description of a school social worker. The School Social Work Association of Mongolia was established on April 26, 2001.



New Zealand

Name and address of person providing this information:

Diane Garrett
Child, Youth and Family
PO Box 1556
Wellington
Diane.Garrett008@cyf.govt.nz

Name of professional school social work association in your country:

New Zealand does not yet have a school social work association. We have a professional association which many School Social Workers belong to - Aotearoa New Zealand Association of Social Workers (ANZASW), and the New Zealand Social Work Registration Board. The School Social Workers contracted by Child, Youth and Family are expected to be registered social workers, or working towards this. The Child, Youth and Family funded school social work services are overseen by Government employed advisors. The websites are below.

Social Workers in Schools web site address: <http://www.cyf.govt.nz/working-with-others/swis-services/index.html>

ANZASW website address: <http://my.anzasw.org.nz/>

New Zealand Registration Board website: <http://www.swrb.govt.nz/>

Name and address of President of your professional school social work association:

N/A

Do school social workers work on:

Attendance problems? Yes with other education professionals such as attendance services

Emotional problems? Yes, behavioural and emotional issues account for the majority of referrals

Behavioural problems? Yes. Resource teachers for Learning and Behaviour (RTLb) will often receive referrals for behavioural issues, however these are learning focused and a referral to school social work may also be appropriate for child with behavioural issues

Material needs, such as food and clothing? School-based social workers will often refer families to other organisations, or other services within their own community organisation to meet the material needs of client families

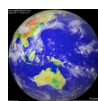
Motivational problems? Yes

Special education for the handicapped? No, however where client families are struggling to cope with the competing demands, grief and stress associated with having a child with disability, social workers may provide support to the families

Child protection? Social workers are community-based and work only with voluntary clients. They assess risk to children and refer to statutory social work services where necessary. They may also co-work with statutory social work services where families are willing to have their support. School social workers work with the family's goals for change.

Do school social workers do the following:

Evaluations? – Yes evaluation of all services is required



Group work? Yes. Group programmes are run to meet identified needs of children and families where a group response/peer interaction is assessed to be valuable work

Casework? Yes. The service includes casework with children and their families and may extend to siblings where needed

Preventive activities? Yes. Social workers are school-based to ensure they can be accessed to support families and children when issues are first identified. Group programme participants may include students who are at risk of developing more serious problems.

Home visits? Yes. Many parents find it more comfortable to meet with social workers in their home. Social workers are also able to meet with other family members in a more natural environment

Counselling? Yes as part of individual casework and as the skills of the social workers dictate, however school social workers are not employed as counsellors. Often counselling will be referred on to specialist services as needed

Consultation with teachers? Yes as part of relationship building, collaboration and networking. Wherever appropriate, and with client permission school teachers should be encouraged to be part of the planning for change if the child's issues relate to school

Are school social workers employed by school or school system?

No

Other agency?

A range of non government social services organizations throughout New Zealand. Funding allocation for the service comes from Government. The Ministry of Social Development's child protection funding arm contracts with selected NGO service providers to employ and manage the service to schools locally

What are the qualifications required for employment as a school social worker?

A social work qualification that meets the criteria for NZ Social Work Registration. In most cases this means an under-graduate degree in social work, however this is not mandatory on employment. If a social worker is employed having only partially completed this study, they need to be actively working towards qualification, and Registration

What is the professional title used for school social workers?

Social worker in Schools (SWiS)

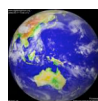
Approximate number of school social workers employed in your country:

165 social workers are working in primary and intermediate schools up to age 13, and 21 social workers are working at secondary school level (13-18 yrs)

New Zealand is currently expanding this service following an increase in Government investment. By mid 2013, we expect to have contracts in place for 274 school-based social workers working in low decile primary and intermediate schools

When did school social work start in your country?

The Social Workers in Schools service was established in 1999

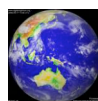


Nigeria

Information from Dr. James Ayangunna

For example, Lagos has about 500 school social workers in all government schools. They may all be trained social workers for now but the fact that such positions are recognised by government and 'filled', in my opinion, is a positive move. They surely will be trained because Lagos State Government emphasises professionalism in their services including social work services.

Again, my department (Department of Social Work, University of Ibadan) is organising a 2-3 days seminar for Principals in Oyo State, Nigeria. This is going to be a follow-up to the performance of our students posted to them on practicum. The Principals appreciated their performance and requested for such posting. This seminar is aimed at further sensitizing all of them on the need to have government post school social workers to schools. We are waiting on government for support in this regard.



Norway

Name and address of person providing this information:

Ellen Galaasen, Executive Officer
Pb. 4693 Sofienberg, 0506 Oslo, Norway
Phone: 00 47 23 06 13 32 and 00 47 98 61 98 28
Ellen.Galaasen@fo.no

Name of professional school social work association in your country:

Norwegian Union of Social Educators and Social Workers
Fellesorganisasjonen for Barnevernpedagoger, Sosionomer og Vernepleiere (FO)

Web site address:

www.fo.no

Name and address of President of your professional school social work association

Randi Reese	President	phone: 00 47 23 06 11 51
Siv Karin Kjølmoen	1. Vice President	phone: 00 47 23 06 11 59
Kjetil A. Ostling	2. Vice President	phone: 00 47 23 06 11 75
Mimmi Kvisvik	3. Vice President	phone: 00 47 23 06 13 31

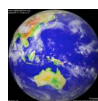
Address: Pb. 4693 Sofienberg, 0506 Oslo, Norway
kontor@fobsv.no

Do school social workers work on:

Attendance problems?	Yes
Emotional problems	Yes
Behavioural problems?	Yes
Material needs, such as food and clothing?	No
Motivational problems?	Yes
Special education for the handicapped?	Yes
Child protection?	Yes

Do school workers do the following:

Evaluations?	Only with children with mental handicaps or if the social worker has skills in special education.
Group work?	Yes
Casework?	Yes
Preventive activities?	Yes
Home visits?	Yes
Counselling?	Yes
Consultation with teachers?	Yes



Are school social workers employed by:

School or school system?

Yes. Primary and secondary schools are public and administered on the municipal level. Sometimes municipalities use the services of social workers that are employed in other agencies, for example the municipal child welfare-services or health services for children and youth.

What are the qualifications required for employment as a school social worker?

Three year post-graduate education on bachelor level as:

- Social Workers (sosionom)
- Child Welfare workers (barnevernpedagog)
- Social educator (vernepleier)

Teachers with further training in social education and special education often work with similar tasks as the social workers in schools.

What is the professional title used for school social workers

In Norway, employing social workers in the schools is not compulsory. To expand the number of social workers in the school system is a task for FO. The social worker that already works within the school system has been hired on the initiative from the local schools or municipalities. They have different tasks inside of school system. Mainly the social workers work with individuals at risk and their families, and with groups of children. An important part of the work is also to establish and work with good relations between pupils, their families, teachers and services outside of the school, like psychiatric services, child welfare services and social services.

Some commonly used titles of social workers in the schools:

Miljøterapeut	- social environment therapist
Miljøarbeider	- social environment workers
Vernepleier	- social educator
Barnevernpedagog	- child welfare workers

Other titles are:

Sosionom	- social worker
Sosiallærer	- social teacher
Sosialkurator	- social caseworker
Assistent	- assistants

Approximate number of school social workers employed in your country:

FO has approximately 430 members that are working in schools, about 350 in primary schools and about 80 in secondary schools. About 190 are child welfare workers, 200 are social educators, and 40 are social workers.

240 members of FO work in kindergartens, 60 in activity-centres' for schoolchildren between 6 and 10 years of age, and 50 members working in the service for psychological and pedagogical support that are a part of the education system for youngsters. There are also



about 25 social workers in the governmental competence centres, who can advise on certain form of handicaps, diagnoses and problems.

When did school social work start in your country?

Social workers have been a part of the Norwegian school system from the 1950's. Then they were employed in special schools for children and youth with behavioural problems or physical and mentally handicaps. Inside of these institutions they were responsible for care, upbringing and education. Such schools do not longer exist, since the early 1990's children in need of extra care has been integrated in the ordinary school system. The social workers were not transferred into the ordinary school system with the children, but faded out, although some remained inside of governmental competence centres, as mentioned earlier.

The school system in Norway has changed a great deal the last 30 years. From having a strict school policy based on discipline, and a view that the school systems sole role was educational, today the school system also has been given a role in reducing social differences. An important task is that all children and youth are included in the ordinary school system, and are offered a type of education that is adjusted to their capabilities. Thus there is a need for other professions apart from the teachers. Unfortunately this has not been formalised, but because some schools and communities have been aware of the value in employing social workers, we now find them in school system. This has happened the last 10-15 years.

More information about FO:

FO is a voluntary Professional Association and Trade Union with about 23,000 members. FO is a member of the International Federation of Social Workers (IFSW), International Association of Social Educator (AIEJI) and member of a Nordic Organization for Social Workers (NSSK) and Nordic Organization for Socialpedagogs (NFFS).

FO recruits social worker professionals that have at least post-graduate education at Bachelor level. We are also accepting students to the Professions as members. These professions are:

- **Child Care workers (barnevernpedagog)**

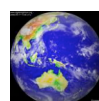
The profession has it origin in the care of children, youth and families at risk. Finding ways of giving good quality of care, raising and treatment for the children and their families are the main tasks.

- **Social Workers (sosionom)**

The profession works with social problems with individuals and groups, and looks for possible changes in the services offered, in the organization of services, in the environment and in the individuals themselves.

- **Social educator (vernepleier)**

The profession has it origin in the care of the mentally disabled. The scope of the actual training and occupational function has been widened to include the care and social education of people with developmental impairments and functional disabilities. The social educator is also an authorized health worker.



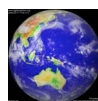
- **Welfare Administration Workers (velferdsarbeidere)**

This is a new profession in Norway, and has its origin in the welfare state's need to give structured help to adult people that are unemployed, but do not have the possibility of work because of health problems or have need of assistance for some kind of social problems. Welfare Administration Workers do not yet work inside of school system.

Most of the members of FO work in the public sector. Of these, the majority work at the municipal level, in Social Services, Child Welfare, Care of mentally disabled, Rehabilitation and Home-based care. A significant number of members also work in Hospitals, Psychiatric institutions and Child Welfare Institutions. Some also works universities, prisons, NGOs etc.

Being both a Professional Association and a Trade Union our activities vary from wage negotiations and work-place activities, via lobbying on matters concerning Social policy, to activities to promote professional social work and education. Ethics is fundamental in social work and ethical issues are high on FO's agenda.

The Association has branches with offices and fulltime shop stewards in all 19 counties of Norway. In addition we have several full-time and part-time shop stewards in the bigger municipalities and institutions. The main office is located in Oslo. The president and three vice presidents are elected by the congress every fourth year.



Singapore

Name and address of person providing this information:

Wu Mei Ling

wu_meiling@students.org.sg

Name of professional school social work association in your country:

Singapore Association of Social Workers – School Social Work Chapter

Web site address: www.sasw.org.sg

Name and address of President of your professional school social work association:

Wu Mei Ling, Chairperson, wu_meiling@students.org.sg

Do school social workers work on:

Attendance problems?	Yes
Emotional problems?	Yes
Behavioral problems?	Yes
Material needs, such as food and clothing?	Yes but not prevalent
Motivational problems?	Yes
Special education for the handicapped?	Yes but limited to social workers working in special schools.
Child protection?	Yes, jointly with Child Protection Officers from Ministry of Community, Development, Youth and Sports.

Do school social workers do the following:

Evaluations?	Yes
Groupwork?	Yes
Casework?	Yes
Preventive activities?	Yes
Home visits?	Yes
Counseling?	Yes
Consultation with teachers?	Yes

School social workers employed by:

School social workers are employed by schools and various Voluntary Welfare Organizations

What are the qualifications required for employment as a school social worker?

Bachelor of Arts (Social Work)

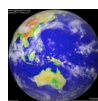
What is the professional title used for school social workers? School Social Worker

Approximate number of school social workers employed in your country:

Information unavailable

When did school social work start in your country?

1965



Slovakia

Name and address of person providing this information:

Tatiana Matulayová, Sabinovská Street 18, 080 01 Prešov, Slovakia
tatiana.matulayova@tul.cz

Name of professional school social work association in your country:

Does not exist

Name and address of President of your professional school social work association: -

Slovak law does not recognize the concept of school social work and school social worker, despite the fact that social work education is implemented in practice.

More information about the implementation of school social work in Slovakia can be found in the paper *Current State of School Social Work Development in Slovakia* by Renáta Hrušková and Tatiana Matulayová (Contact tatiana.matulayova@tul.cz for a copy).

Do school social workers work on:

Attendance problems?	Yes
Emotional problems?	Yes
Behavioral problems?	Yes
Material needs, such as food and clothing?	Yes
Motivational problems?	Yes
Special education for people with disabilities?	No
Child protection?	Yes

Do school social workers do the following:

Evaluations?	Yes
Groupwork?	Yes
Casework?	Yes
Preventive activities?	Yes
Home visits?	Yes
Counseling?	Yes
Consultation with teachers?	Yes

School social workers employed by:

1 case - school, 3 cases - local government

What are the qualifications required for employment as a school social worker?

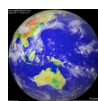
Bachelor's or Master's study program in the field of Social Work

What is the professional title used for school social workers

School social worker in Slovak language: školský sociálny pracovník.

Approximate number of school social workers employed in your country: 4

When did school social work start in your country? 2006



South Africa

Name and address of person providing this information:

Carola Petersen, Department of Basic Education, Private Bag X895 Pretoria, 0001

Petersen.C@dbe.gov.za

Name of professional school social work association in your country:

None

Name and address of President of your professional school social work association:

None

Do school social workers work on:

Attendance problems?	Yes
Emotional problems?	Yes
Behavioral problems?	Yes
Material needs, such as food and clothing?	At times, but not always
Motivational problems?	Yes
Special education for the handicapped?	Yes
Child protection?	Yes

Do school social workers do the following:

Evaluations?	Yes
Groupwork?	Yes
Casework?	Yes
Preventive activities?	Yes
Home visits?	Yes
Counseling?	Yes
Consultation with teachers?	Yes

Are school social workers employed by:

School or school system? Some are employed by the Provincial Education Departments.
Others are directly employed by the school through the School Governing Body.

What are the qualifications required for employment as a school social worker?

Degree in Social Work and registered with the Professional Council of Social Work

What is the professional title used for school social workers:

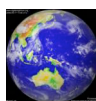
School Social Worker or just Social Worker

Approximate number of school social workers employed in your country:

Not known

When did school social work start in your country?

Not known



Sri Lanka

Name and address of person providing this information:

Sanjeeva de Mel
serve@sltnet.lk

Name of professional school social work association in your country:

SERVE

Web site address: www.serve.lk (Presently under construction)

Name and address of President of your professional school social work association:

Sanjeeva de Mel (Mr.)

Do school social workers work on:

Attendance problems?	Yes
Emotional problems?	Yes
Behavioral problems?	Yes
Material needs, such as food and clothing?	Yes
Motivational problems?	Yes
Special education for the handicapped? blind children)	No (but we work with deaf and
Child protection?	Yes

Do school social workers do the following:

Evaluations?	Yes
Groupwork?	Yes
Casework?	Yes
Preventive activities?	Yes
Home visits?	Yes
Counseling?	Yes
Consultation with teachers?	Yes

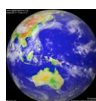
Are school social workers employed by:

School or school system? Yes in two private schools initiated by SERVE, and now carrying out activities independently

Other agency? (Give agency names) yes - SERVE and Hope for Children (non profit organisation)

What are the qualifications required for employment as a school social worker?

Minimum of a 2 year Diploma from the National Institute of Social Development (Sri Lanka)



What is the professional title used for school social workers?

School Social Worker. In Sinhala - "Pasal Samaja Wedakaru"

Approximate number of school social workers employed in your country:

9 working in 10 schools

When did school social work start in your country?

1997



Sweden

Name and address of person providing this information:

Yvonne D-Wester
1:a skolkurator Skolstöd
Avd. för uppdrag kring lärande och elevhälsa
Utbildningsförvaltningen
Box 22049, 104 22 Stockholm
08 - 508 33 646
070 - 46 33 646
yvonne.wester@stockholm.se

Name of professional school social work association in your country:

Sveriges Skolkuratorers Förening
(School Social Work Association of Sweden)

Web site address:

<http://www.skolkurator.nu>

Name and address of President of your professional school social work association:

Ordförande (President) Sveriges Skolkuratorers Förening
Yvonne D-Wester
1:a skolkurator Skolstöd
Avd. för uppdrag kring lärande och elevhälsa
Utbildningsförvaltningen
Box 22049, 104 22 Stockholm
08 - 508 33 646
070 - 46 33 646
yvonne.wester@stockholm.se

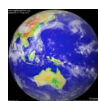
Do school social workers work on:

Attendance problems?	Yes
Emotional problems?	Yes
Behavioral problems?	Yes
Material needs, such as food and clothing?	No
Motivational problems?	Yes
Special education for the handicapped?	Yes
Child protection?	No

We are, like physicians and teachers, mandatory reporters. We do not have investigative duties nor do we do any type of treatment plans in protective matters. We try, however, to work as closely as we can with child protective agencies.

Do school social workers do the following:

Evaluations? Yes



Groupwork?	Yes
Casework?	No
Preventive activities?	Yes
Home visits?	Occasionally
Counseling?	Yes
Consultation with teachers?	Yes

Are school social workers employed by:

School social workers are most often employed directly by schools or by the county. In some cases they can be employed by the Department of Social Services.

What are the qualifications required for employment as a school social worker?

Bachelor's Degree in Social Work. Some previous work in family and child protection is often desired but not a requirement.

What is the professional title used for school social workers?

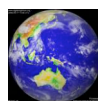
School Social Worker
Skolkurator

Approximate number of school social workers employed in your country:

1500-2000

When did school social work start in your country?

In the early 1950's.



Switzerland

Name and address of person providing this information:

Prof.

florian.baier@fhnw.ch

Name of professional school social work association in your country:

AvenirSocial and SSAV

Web site address: www.avenirsocial.ch and www.ssav.ch.vu and www.schulsozialarbeit.ch

Name and address of President of your professional school social work association:

Do school social workers work on:

Attendance problems?	Yes
Emotional problems?	Yes
Behavioral problems?	Yes
Material needs, such as food and clothing? spare-time activities)	Seldom (sometime financial support for
Motivational problems?	Yes
Special education for people with disabilities?	Yes
Child protection?	Yes

Do school social workers do the following:

Evaluations?	Some do
Groupwork?	Yes
Casework?	Yes
Preventive activities?	Yes
Home visits?	Seldom
Counseling?	Yes (main activity)
Consultation with teachers?	Yes

Are school social workers employed by:

School or school system? both

Other agency? yes

What are the qualifications required for employment as a school social worker?

BA Social Work

What is the professional title used for school social workers?

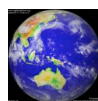
Schulsozialarbeiter (male) / *Schulsozialarbeiterin* (female)

Approximate number of school social workers employed in your country:

600

When did school social work start in your country?

In the French speaking part in the 1970's, in the German speaking part in the 1990's.



What are the qualifications required for employment as a school social worker?

Initially persons with a degree in the Social Sciences were employed as School Social Workers. Hence there were School Social Workers with BSc in Psychology, Sociology, Behavioural Science as well as Social Work.

There has been a revision of the employment policy recently however to give preference to persons with degrees in Social Work over other qualifications.

What is the professional title used for school social workers

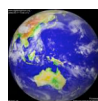
School Social Worker and Senior School Social Worker. Senior School Social Workers supervise School Social Workers within an Educational District.

Approximate number of school social workers employed in your country:

Presently we have 45 School Social Workers on staff.

When did school social work start in your country?

School Social Work began in 2004. Prior to this date students received Social Work intervention from Social Workers based in the Ministry of Social Development.



United States of America

Name and address of person providing this information:

Michelle Alvarez, President of the School Social Work Association of America,
michelle.alvarez@mnsu.edu

Name of professional school social work association in your country:

School Social Work Association of America www.sswaa.org
National Association of Social Work has a School Social Work section
<http://www.socialworkers.org/>

Name and address of President of your professional school social work association:

President of SSWAA , Dr. Michelle Alvarez, michelle.alvarez@mnsu.edu Executive Director
Frederick Streeck, ContactUs@sswaa.org

President of NASW Jeane W. Anastas, PhD, LMSW
Executive Director of NASW, Elizabeth J Clark
PhD, ACSW
<http://www.naswdc.org/>

Do school social workers work on:

Attendance problems?	Yes
Emotional problems?	Yes
Behavioral problems?	Yes
Material needs, such as food and clothing?	Yes
Motivational problems?	Yes
Special education for the handicapped?	Yes

(Note: Role of school social workers varies according to the state and school district).

Do school social workers do the following:

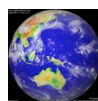
Evaluations?	Yes
Groupwork?	Yes
Casework?	Yes
Preventive activities?	Yes
Home visits?	Yes
Consultation with teachers?	Yes

(Note: Role of school social workers varies according to the state and school district).

Are school social workers employed by:

School or school system? Yes
Other agency? Sometimes

What are the qualifications required for employment as a school social worker? Usually MSW, some states require university courses and a field placement in a school, and a few states require an exam



What is the professional title used for school social workers?

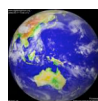
Usually “school social worker”, but a variety of other titles are used when school social workers work in special programs.

Approximate number of school social workers employed in your country:

Estimate is over 30,000

When did school social work start in your country?

1906



Vietnam

Name and address of person providing this information:

Le Chi An

lechian@yahoo.com; lechian@gmail.com

Name of professional school social work association in your country:

None

Name and address of President of your professional school social work association: None

Do school social workers work on:

Attendance problems?

Yes, School social workers work with drop-out pupils and their families. However, they could not concern with the pupils who come to class late because of large number of pupil. School social workers talk to pupils and teachers to realize the reasons that pupils drop out; support them with counseling.

Emotional problems?

Yes, school social workers concern with pupils who is sad suddenly and depressed. They especially take interest into dumb pupils' emotion.

Behavioral problems?

Yes, school social workers approach pupils and help them to avoid unsafe sex; support pupils who has been discouraged, tended to suicide and pupils involved in violence.

Material needs, such as food and clothing?

Yes, school social workers inform pupils how to use safe food; not to buy and eat the unsanitary food sold in front of school. Some school social workers collect used clothing to help the poor pupils. However, school social workers could not interfere this problem in case pupils have to wear their uniform.

Motivational problems?

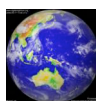
Yes, school social workers also investigate the pupils' ways of learning in order to know their learning motivation and help them, courage them especially who is lazy, boring. In some schools, school social workers also make orientation for pupils.

Special education for people with disabilities?

Yes, school social workers support pupils with disability like facilities: chairs, table suitable with their disability. Psychological support to them with spirit encourage, help them to integrate with others - inclusive education. Some school social workers learn symbol language in order to communicate with deaf pupils.

Child protection?

Yes, school social workers cooperate with Youth Union to protect pupils based on Rights of the Child and Law on Protection, Care and Education for the Child. Social workers also advocate for the child in case violence, child abused, neglected, child labor abused. Social workers share information, knowledge for pupils to prevent risks or law violation.



Do school social workers do the following:

- ① Evaluations?
- ② Group work?
- ③ Casework?
- ④ Preventive activities?
- ⑤ Home visits?
- ⑥ Counseling?
- ⑦ Consultation with teachers?

Are school social workers employed by:

School or school system?

Other agency?

At present, in Vietnam there is no policy to recruit social workers working in schools. However, some schools based on their need to recruit school social workers by themselves but social workers play a role of school counselor or discipline supervisor (pupils are afraid of supervisors).

What are the qualifications required for employment as a school social worker?

- 1. Having knowledge in social work and school social work
- 2. Or graduated from psychology
- 3. Being trained on counseling
- 4. Having knowledge on school environment, teachers' psychology and education management
- 5. Ability in diagnosis pupils' problems and home visits
- 6. Having good relationship with different organizations in providing education services.
- 7. Documentation

What is the professional title used for school social workers

At present, in Vietnam, some schools used term "counselor". However, we like the term: "school social workers" or "school counselor"

Approximate number of school social workers employed in your country:

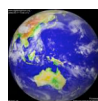
No statistics

When did school social work start in your country? :

Since 2000, Open University had developed a pilot project "School social work" at 2 schools in HoChiMinh City. After 2-year implementation, the project had to stop because the donor close the activity.

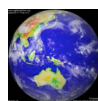
At the same time, about 15 schools in HCM City also developed counseling in their school, but not school social work.

Since 3/2010, Prime Minister has signed Decree No 32 to promote social work profession in VN period 2010-2020. Ministry of Health has planned a project to develop social work in health care but Ministry of Education and Training has not yet. So far, we still wait for the day social work will be introduced into schools with official name: school social work.



Supplement to The 2012 International Survey of School Social Work

The following is information from countries for which up-to-date data is not available. Information from the surveys conducted in 2006 or 2003 is given below.



Estonia (Information from 2003)

Name and address of person providing this information:

Judit Strömpl, Tiigi Str. 78, 50410 Tartu, Estonia

Name of professional school social work association in your country:

There is no prof. Association.

Name and address of President of your professional school social work association: -

Do school social workers work on:

Attendance problems?	Mostly
Emotional problems?	Yes
Behavioral problems?	Yes
Material needs, such as food and clothing?	Yes
Motivational problems?	Not specially
Special education for the handicapped?	Not specially

Do school social workers do the following:

Evaluations?	Not specially
Groupwork?	Not specially
Casework?	Yes
Preventive activities?	Not specially
Home visits?	Mostly
Counseling?	Mostly
Consultation with teachers?	Yes

Are school social workers employed by:

School or school system? Some schools employ, but it is not a rule.

Other agency? Social security department by local government (in Tartu)

Department of education by local government (in Pärnu town)

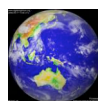
There is no common system yet in Estonia, but from next year (2004) there is a wish to employ school social workers (or school pedagogues) by schools. There is plan to develop the system together with social and education sphere, where the professional coordination will belong to the social sphere while school social workers will belong to the school system. However, these plans are in working stage on the local level.

What are the qualifications required for employment as a school social worker?

University bachelor degree on social work.

What is the professional title used for school social workers

It depends on the system where are they belong. In Tartu they are now child protection workers on school social work (in Estonian: lastekaitsetöötaja koolisotsiaaltöö alal), in Pärnu there are school social workers (in Est.: koolisotsiaaltöötaja). There are also school pedagogues (in Est.: sotsiaalpedagoog). The professional title depends on preliminary



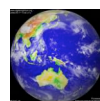
education. If a person has social work education – he or she has the title of school social worker; while if he or she has a pedagogical education – he or she prefer the title of social pedagogue.

Approximate number of school social workers employed in your country:

Around 60.

When did school social work start in your country?

Autumn 1994.



Ghana (Information From 2006)

Name and address of person providing this information:

1. Foli Bright
Ghana Education Service (GES)
P O Box M 148, Accra
(School Social Work Dept.)
2. Sofo Abdullai Sulemana
Ghana Education Service
P O Box M 148, Accra
(Special Education Dept)
3. Agatha Asubonteng-Manu
Ghana Education Service
P O Box M 148, Accra
(Guidance and Counselling Dept.)

Name of professional school social work association in Ghana:

“School Social Work Association of Ghana (SSWAG).”

Web site address: In the process of developing one.

Name and address of President of your professional School Social Work Association.

Esther B A Mahama
P O Box CT 4194
Cantonments, Accra-Ghana

Do school social workers work on:

Attendance problems?	-	Yes
Emotional problems?	-	Yes
Behavioural problems	-	Yes
Material needs, such as food and clothing	-	Yes
Motivational problems	-	Yes
Special education for the handicapped	-	Yes
Child protection	-	Yes

Do school social workers do the following?

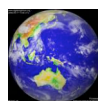
Evaluation	-	Yes
Group work	-	Yes
Case work	-	Yes
Preventive activities	-	Yes
Home visits	-	Yes
Consultation with teachers	-	Yes

Are school social workers employed by school or school system?

- (i) School social workers are employed by the school system
- (ii) Some are employed by other agencies and NGOs working with children and youth.

They include:

1. Action Aid (Ghana)



2. United National Fund for population activities (UNFPA) through “African Youth Alliance Programme)”
3. Plan International (Ghana)
4. Voluntary Services Oversea (VSO) – Their activities are concentrated on two Regions of Ghana: Western and Ashanti Regions

These are a few examples. (In future, we will systematically compile a list of agencies working with school children).

What are the qualifications required for employment as a school social worker?

School Social Workers in Ghana are professional teachers who received further professional training at the school of Social Work, University of Ghana, Legon at the diploma, first degree and master’s degree levels. Currently, most diploma holders of social work qualification are getting back to school to update their qualifications to the first degree level.

They carry the title “School and Staff Welfare Officers or simply Welfare Officers.”

- (i) Certified/Diploma in Special Education/B.Ed Special Education.
- (ii) B.Ed Guidance and Counselling

Unlike the two stated above, Guidance and counselling officers are being posted to secondary schools in the country.

Professional title used for school social workers.

There are three professional groups whose work is inter-related: “the Welfare Officers”, “the peripatetic officers” and “Guidance and Counselling Officers.” Currently, there has been a concerted effort to replace the title “Welfare Officer” with “School Social Worker”, but unfortunately the title Welfare Officer is so deeply imbedded in the minds of teachers, education personnel and parents that the change is hard to be made.

These two departments within the GES receive much more financial support from the system than the other school social work departments.

- (i) Welfare Officers
- (ii) Special educators/peripatetic officers
- (iii) Guidance and Counselling officers

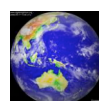
In our local language, “Oman ejuma yefo” (nearest) i.e. community/national voluntary worker.

Approximate number of school social workers in Ghana:

320

School social work started in Ghana

- (i) After World War II
- (ii) Within the Ghana Education Service, formal School Social Work that is welfare services started in 1967.



Hong Kong (Information from 2003)

Name and address of person providing this information:

Ms Klare Chan, Officer (Service Development),
The Hong Kong Council of Social Service
13/F. Duke of Windsor Social Service Building, 15 Hennessy Rd, Wanchai, Hong Kong.

Name of professional school social work association in your country:

See: http://www.info.gov.hk/swd/html_eng/ser_sec/ser_young/index.html

Name and address of President of your professional school social work association:

Please refer to the website of the Social Welfare Department of Hong Kong at
http://www.info.gov.hk/swd/html_eng/ser_sec/ser_young/index.html

Do school social workers work on:

Attendance problems?	Yes
Emotional problems?	Yes
Behavioral problems?	Yes
Material needs, such as food and clothing?	Yes
Motivational problems?	Yes
Special education for the handicapped?	Yes

Do school social workers do the following:

Evaluations?	Yes
Groupwork?	Yes
Casework?	Yes
Preventive activities?	Yes
Home visits?	Yes
Counseling?	Yes
Consultation with teachers?	Yes

Are school social workers employed by:

School or school system? No Other agency? Yes

What are the qualifications required for employment as a school social worker?

Bachelor degree in social work and registered under the social workers registration board.

What is the professional title used for school social workers

School Social Worker

Approximate number of school social workers employed in your country:

We have 466 secondary schools in 2002/2003 school year in which a full time social worker is provided.

When did school social work start in your country?

Started from the 70's.



Saudi Arabia (Information from 2003)

Name and address of person providing this information:

Dr. Mohammed M. Al-Garni

Name of professional school social work association in your country:

School social work Association

Name and address of President of your professional school social work association:

Mohammed M. Al-Garni, Ph.D

Do school social workers work on:

Attendance problems?	No
Emotional problems?	No
Behavioral problems?	No
Material needs, such as food and clothing?	No
Motivational problems?	No
Special education for the handicapped?	Yes

Do school social workers do the following:

Evaluations?	Yes
Groupwork?	Yes
Casework?	Yes
Preventive activities?	
Home visits?	No
Counseling?	Yes
Consultation with teachers?	Yes

Are school social workers employed by:

School or school system? Yes

Other agency?

What are the qualifications required for employment as a school social worker?

Bachelor Degree in Social Work or Sociology or psychology

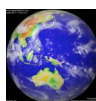
What is the professional title used for school social workers?

School counselor مرشد طلابي

Approximate number of school social workers employed in your country: I think around 10000

When did school social work start in your country?

In 1980



Taiwan (Republic Of China) (Information From 2006)

Name and address of person providing this information:

Yun-Ju Huang (huang.yunju@gmail.com)

Name of professional school social work association in your country:

None

Web site address: None

Name and address of President of your professional school social work association:

None

Do school social workers work on:

Attendance problems? Yes. Following up dropout and truancy students is important work for us.

Emotional problems? Yes. It depends on their problem level.

Behavioral problems? Yes. It depends on their problem level.

Material needs, such as food and clothing? Yes, it is our important work.

Motivational problems? It depends on their problem level.

Special education for the handicapped? We help them to have suitable education and environment in the school system. We have special education teachers for students that they can't learn with common students, including mentally, learning, emotionally handicapped students. If they don't have learning problem, they can learn with others and we work with them to have suitable environment in school.

Child protection? Yes The student assistance team includes special education teachers, counseling and guidance teachers and class tutors. Only a few schools have school social workers. At these schools, we plan for the school social worker to handle tertiary prevention through targeted interventions, while the guidance and counseling staff handle secondary prevention using adult mentors, problem solving education, emotional control support etc.

Do school social workers do the following:

Evaluations? Yes

Groupwork? Yes.

Casework? Yes.

Preventive activities? Yes.

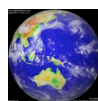
Home visits? Yes.

Counseling? Yes.

Consultation with teachers? Yes.

Are school social workers employed by:

School or school system? Other agency? (Give agency names)
School social workers who work in school are employed by city's or county's department of education.



Some social workers who provide alternative education program are employed by NPO foundations or agencies. (ex, Good Shepherd Sisters Taiwan
<http://www.goodshepherd.org.tw/english/>)

Some social workers who are authorized by government to follow up dropout students are employed by NPO foundations or agencies.(ex, CCF (Children Fund for Children and Families) <http://www.ccf.org.tw/english/index.htm>)

What are the qualifications required for employment as a school social worker?

They must graduate from BSW and pass the interview.

What is the professional title used for school social workers?

School social worker. 學校社會工作者 in Chinese.

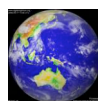
Approximate number of school social workers employed in your country:

There are 58 school social workers employed by city or county departments of education.

When did school social work start in your country?

The system of school social work originated from the public sector since 1997.

The NPO social welfare system provides service for at-risk students (or dropout students) since 1977 by CCF (Children Fund for Children and Families).



United Arab Emirates (UAE) (Information from 2006)

Name and address of person providing this information:

Dr.Mohamed Ibrahim El Walily, elwalily3@yahoo.com

Name of professional school social work association in your country:

Web site address:

Name and address of President of your professional school social work association:

Do school social workers work on:

Attendance problems?	Yes
Emotional problems?	No
Behavioral problems?	Yes
Material needs, such as food and clothing?	No
Motivational problems?	Yes
Special education for the handicapped?	No
Child protection?	Yes

Do school social workers do the following:

Evaluations?	Yes
Groupwork?	Yes
Casework?	Yes
Preventive activities?	Yes
Home visits?	Yes
Counseling?	Yes
Consultation with teachers?	Yes

Are school social workers employed by:

School or school system? No

Other agency? Yes, Ministry of Education

What are the qualifications required for employment as a school social worker?

Bachelor of social work

What is the professional title used for school social workers?

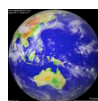
School social worker = (In Arabic) اخصاصي اجتماعي

Approximate number of school social workers employed in your country:

Total = 813 (Male 355 + Female 458)

When did school social work start in your country?

1972



United Kingdom Of Great Britain And Northern Ireland (Information from 2006)

Name and address of person providing this information:

Joe Wilson
Head of Education Access Services
Upperhead Row
Huddersfield
West Yorkshire
HD8 9SH
England
joe.wilson@kirklees.gov.uk

Name of professional school social work association in your country:

National Association of Social Workers in Education

Web site address:

www.naswe.org.uk

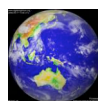
Name and address of President of your professional school social work association:

Stephen Mason
President, NASWE
Education Welfare
Cumbria County Council
5 Portland Square
Carlisle
CA1 1PU
stephen.mason@cumbriacc.gov.uk

Jacqui Newvell
General Secretary, NASWE
Pupil Inclusion Unit
National Children's Bureau
8 Wakley Street
London
EC1V 7QE
jnewvell@ncb.org.uk

Do school social workers work on:

Attendance problems?	Yes
Emotional problems?	Yes
Behavioral problems?	Yes
Material needs, such as food and clothing?	Yes – in some areas
Motivational problems?	Yes
Special education for the handicapped?	Yes
Child protection?	Yes – in some areas



Do school social workers do the following:

Evaluations?	Yes
Groupwork?	Yes – in some areas
Casework?	Yes
Preventive activities?	Yes
Home visits?	Yes
Counseling?	Yes
Consultation with teachers?	Yes

School social workers employed by:

Usually the school system – This is currently changing in parts of the UK, with a move towards an integrated children’s service

Some voluntary organizations employ social workers for schools but this is not common.

What are the qualifications required for employment as a school social worker?

This varies across the country. Local Authorities determine what qualifications are required. In most, the standard is the Diploma in Social Work or a first degree in social work. Some have no qualified SWs but require a degree in a related discipline or other equivalent such as a teaching or youth work or counselling award.

The qualifications will be affected by the new Learning and Development Support Services for Children and Families (LDSS) National Vocational Qualification level 4 (NVQ4), which directly relates to National Occupational standards for Education Welfare Officers, Personal Advisors and Learning Mentors, as recognised by the Department for Education and Skills (DFES). NASWE is about to undertake to scope the current qualifications available for Education Welfare Officers and what the needs are, to establish a training and development framework from entry to Post Qualifying awards.

What is the professional title used for school social workers

Education Social Worker or Education Welfare Officer.

Approximate number of school social workers employed in your country:

Approximately 3,000 ESWs/EWOs. There are also many other staff with similar jobs, such as Personal Advisers, School Counsellors, Learning Mentors etc.

When did school social work start in your country?

We think 1871, although there is some evidence for earlier estimates

